





COMING  
SOON

- Build on the white sandy beach by Mediterranean Sea
- 5 minutes from our 5\* Beachresort & Spa: The Palms
- 100% sea views
- 3 bedroom apartments with large and private terraces
- Extraordinary communal areas with organic pool, spa, beach club, tropical garden etc.
- Luxury beach living every day
- Live in a well communicated and modern region
- The best and healthiest climate in Europe









# Living by Mediterranean Sea

This unique front line project will offer many services for your maximum comfort like restaurant, beach club, pool and spa, tropical gardens... You will be able to enjoy salty air and never ending Mediterranean views from your terrace every day.

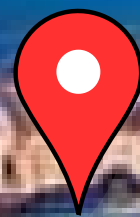
Location on the white sandy beach offers many possibilities how to spend your day and for sure have fun. Discover all water sports popular in this area or enjoy tasty seafood in beach restaurants or fancy drink in the cocktail bars.







First line



100% sea views







# La Manga: The Best Place for Renting in Spain



**La Manga, the best place in Spain to do rental business: profitability is close to 10%.**

The most profitable area in Spain in 2022 was La Manga with 9,7% comparing the annual return on housing in Spain in 2022 stands at 6,5%.

**La Manga: 9,7%**

**Spain in general: 6,5%**

**Comunidad Valenciana: 7,7%**

**Canarias: 6,8%**

**Andalusia: 6,0%**

**Madrid: 5,5%**

**Balearic Islands: 5,2%**















CALBLANQUE

CARTAGENA

LA MANGA CLUB

LA MANGA

HARBOUR

CABO DE PALOS





# Dream Beach Escape

Unique and a once in a lifetime location on the extraordinary sandy beach with crystal clear water between two seas. Daydreaming on the beach!

You can enjoy your glass of sangria with never ending sunsets from your terrace every day. Explore incredible location between two seas and blue Mediterranean waters which has a lot to offer. An unbeatable location for a dream holiday or extraordinary lifestyle.



















# Infinity Pool with Spa

You will be able to enjoy relaxing by a special infinity pool with spa with the views to Mediterranean Sea. Our philosophy is to make this place unforgettable and fit into the incredible location.





















# The Best Views in Whole Area

A 24 km strip of land that separates the Mediterranean Sea from a shallow, open warm water lagoon, which makes our project Miami Towers one of the few places in the world where it is possible to swim in two seas and see the sun rise and set over the water.

You can enjoy crystal clear water and white sandy beaches which gives this unusual place Caribbean vibes.







Daily you can see much blue color decorated with palm trees as possible. White sandy beaches gives La Manga unique Caribbean vibes. The visitours usually names this place as paradise between two seas. You will not be tired of view never.

Our resort is first line construction, every unit will have 100% sea views without any building or rush.





























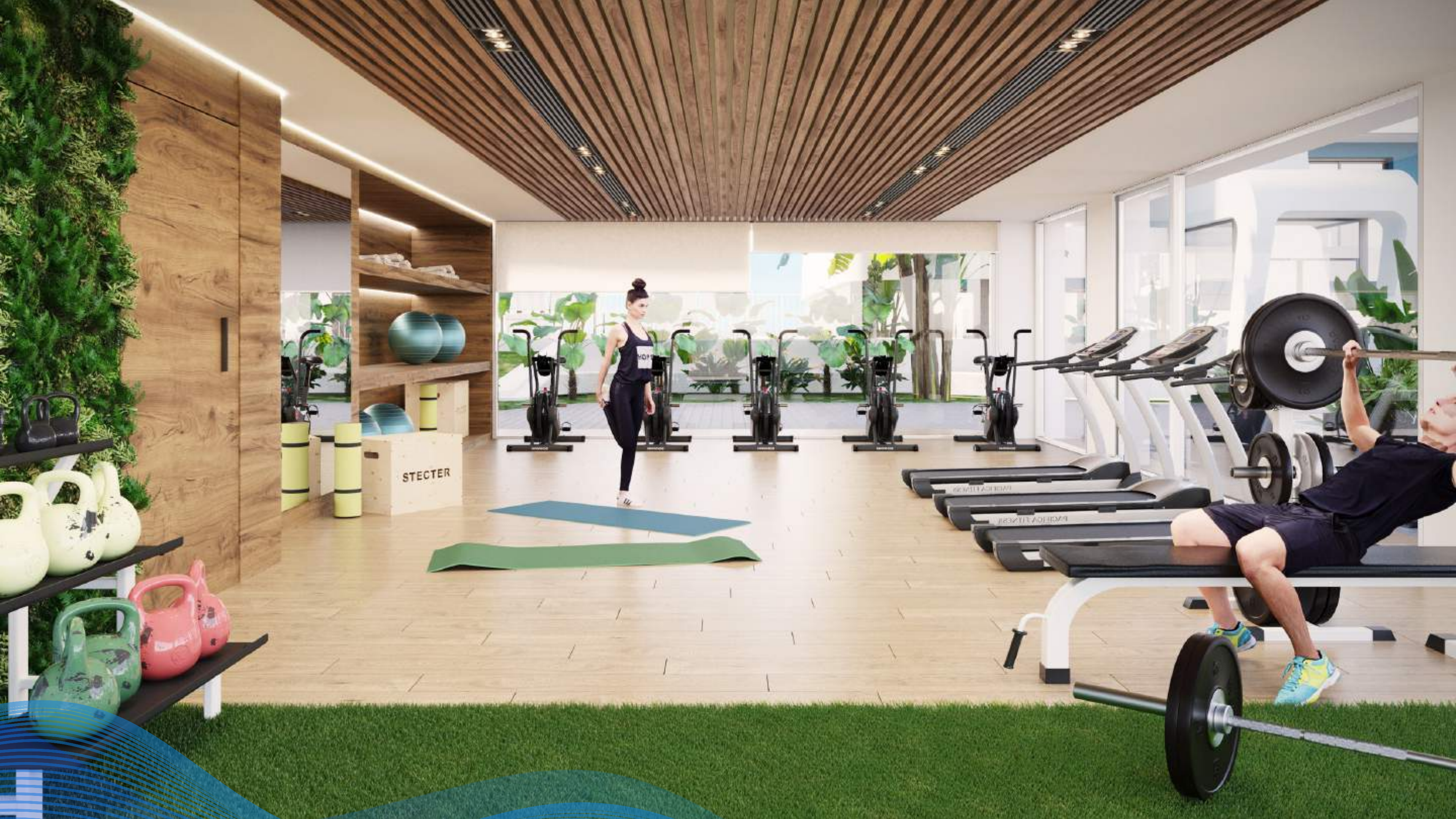




MIAMI  
TOWERS







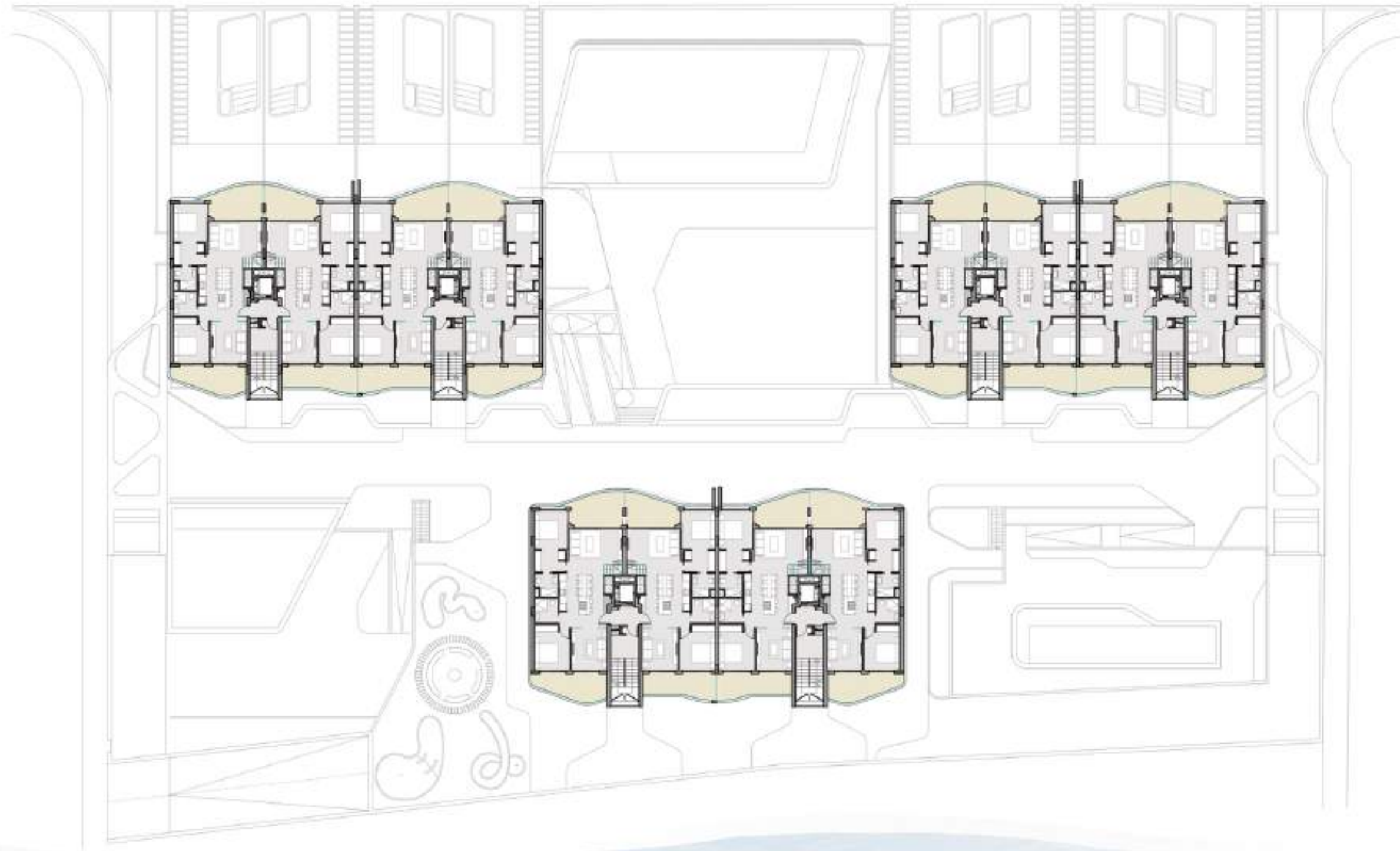


# Floorplans

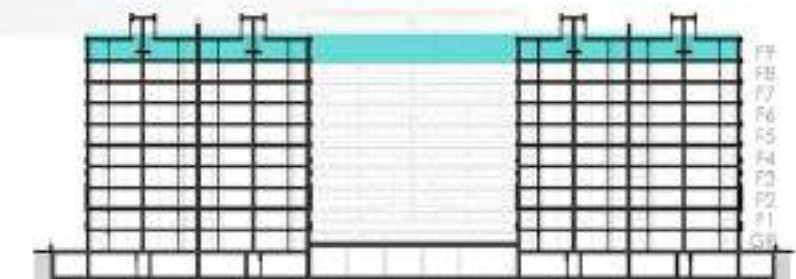




SOUTH EAST  
MEDITERRANEAN SEA



SOUTH WEST  
MINOR SEA







VIVIENDA/HOUSE  
BLOCK 1/GR. FLOOR

A

SOUTH WEST  
MINOR SEA



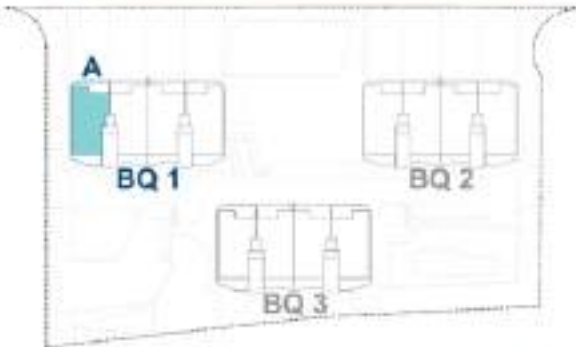
SOUTH EAST  
MEDITERRANEAN SEA



TOTAL

TOTAL BUILT AREA	229.27 m²
HOUSE BUILT AREA	84.56 m²
TERRACE	23.06 m²
GARDEN	106.69 m²
PARKING AREA	10.49 m²
STG. ROOM AREA	4.47 m²

MEDITERRANEAN SEA



MINOR SEA

Plano y seña de posición modificados por razones o exigencias de índole técnico o jurídica. Las superficies son aproximadas. Cocina y amueblamiento orientativo, sin valor contractual. /  
Plans and location modified for reasons or requirements of a technical or legal nature. Surfaces are approximate. Kitchen and furniture for guidance, without contractual value.

G  
r  
o  
u  
n  
d  
  
F  
l  
o  
o  
r

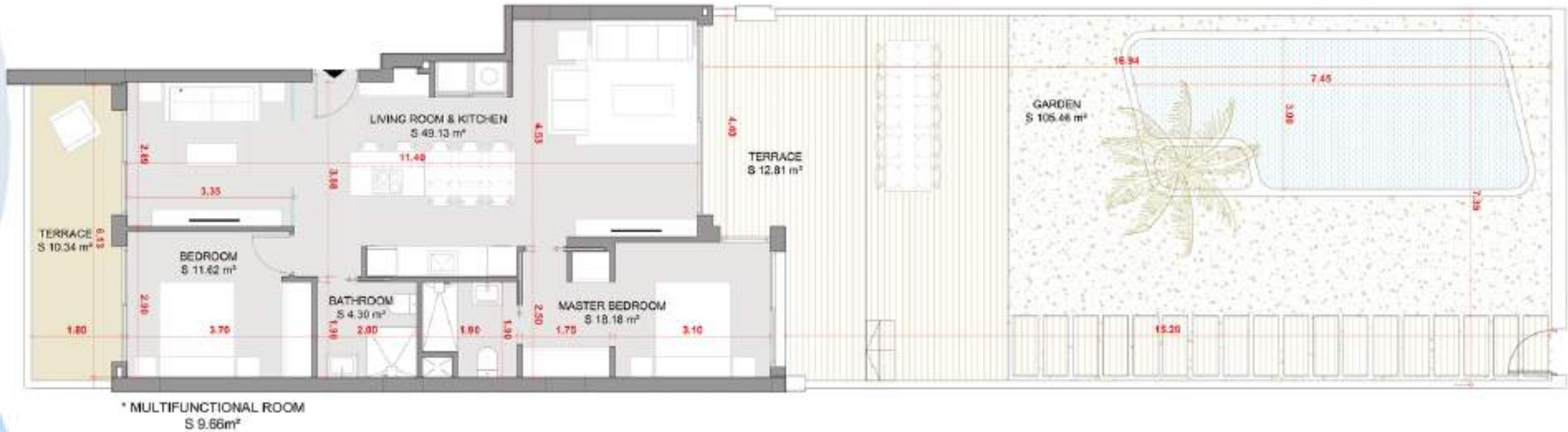




VIVIENDA/HOUSE  
BLOCK 1/GR. FLOOR

B

SOUTH WEST  
MINOR SEA



SOUTH EAST  
MEDITERRANEAN SEA



TOTAL

TOTAL BUILT AREA	226.80 m²
HOUSE, BUILT AREA	83.23 m²
TERRACE	23.15 m²
GARDEN	105.46 m²
PARKING AREA	10.49 m²
STG. ROOM AREA	4.47 m²



Plano y área de posibles modificaciones por razones o exigencias de índole técnica o jurídica. Las superficies son aproximadas. Cocina y amueblamiento orientativo, sin valor contractual. /  
Plan and area of possible modifications for reasons or requirements of a technical or legal nature. Surfaces are approximate. Kitchen and furniture for guidance, without contractual value.

G  
r  
o  
u  
n  
d  
  
F  
l  
o  
o  
r





VIVIENDA/HOUSE C  
BLOCK 1/GR. FLOOR

Ground Floor

SOUTH WEST  
MINOR SEA

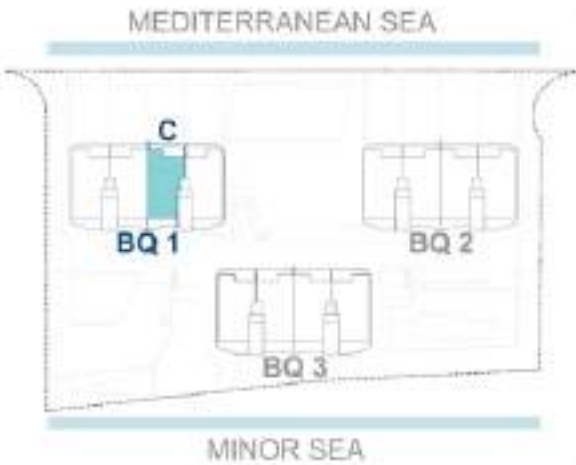


SOUTH EAST  
MEDITERRANEAN SEA



TOTAL

TOTAL BUILT AREA	226.80 m²
HOUSE BUILT AREA	83.23 m²
TERRACE	23.15 m²
GARDEN	105.46 m²
PARKING AREA	10.49 m²
STG. ROOM AREA	4.47 m²



Plano a guisa de posibles modificaciones por razones o exigencias de índole técnico o jurídica. Las superficies son aproximadas. Cocina y amueblamiento orientativo, sin valor contractual. /  
This is not a contract. It is only a guide for possible modifications for reasons or requirements of a technical or legal nature. Surfaces are approximate. Kitchen and furniture for guidance, without contractual value.

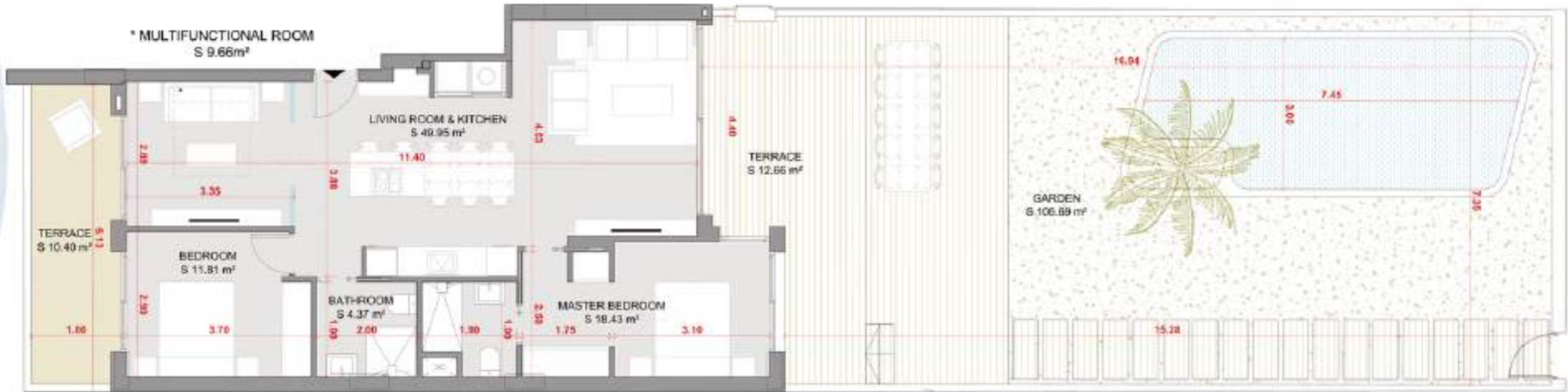




VIVIENDA/HOUSE  
BLOCK 1/GR. FLOOR

D

SOUTH WEST  
MINOR SEA



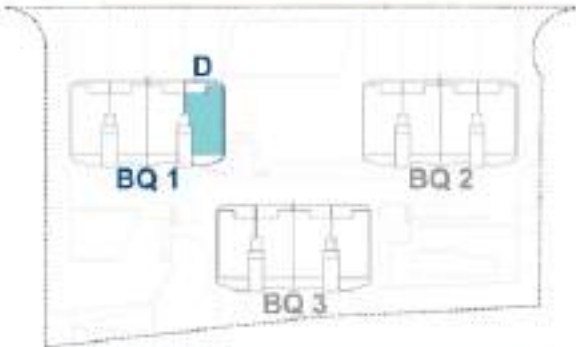
SOUTH EAST  
MEDITERRANEAN SEA



TOTAL

TOTAL BUILT AREA	229.27 m <sup>2</sup>
HOUSE, BUILT AREA	84.56 m <sup>2</sup>
TERRACE	23.06 m <sup>2</sup>
GARDEN	106.69 m <sup>2</sup>
PARKING AREA	10.49 m <sup>2</sup>
STG. ROOM AREA	4.47 m <sup>2</sup>

MEDITERRANEAN SEA



MINOR SEA

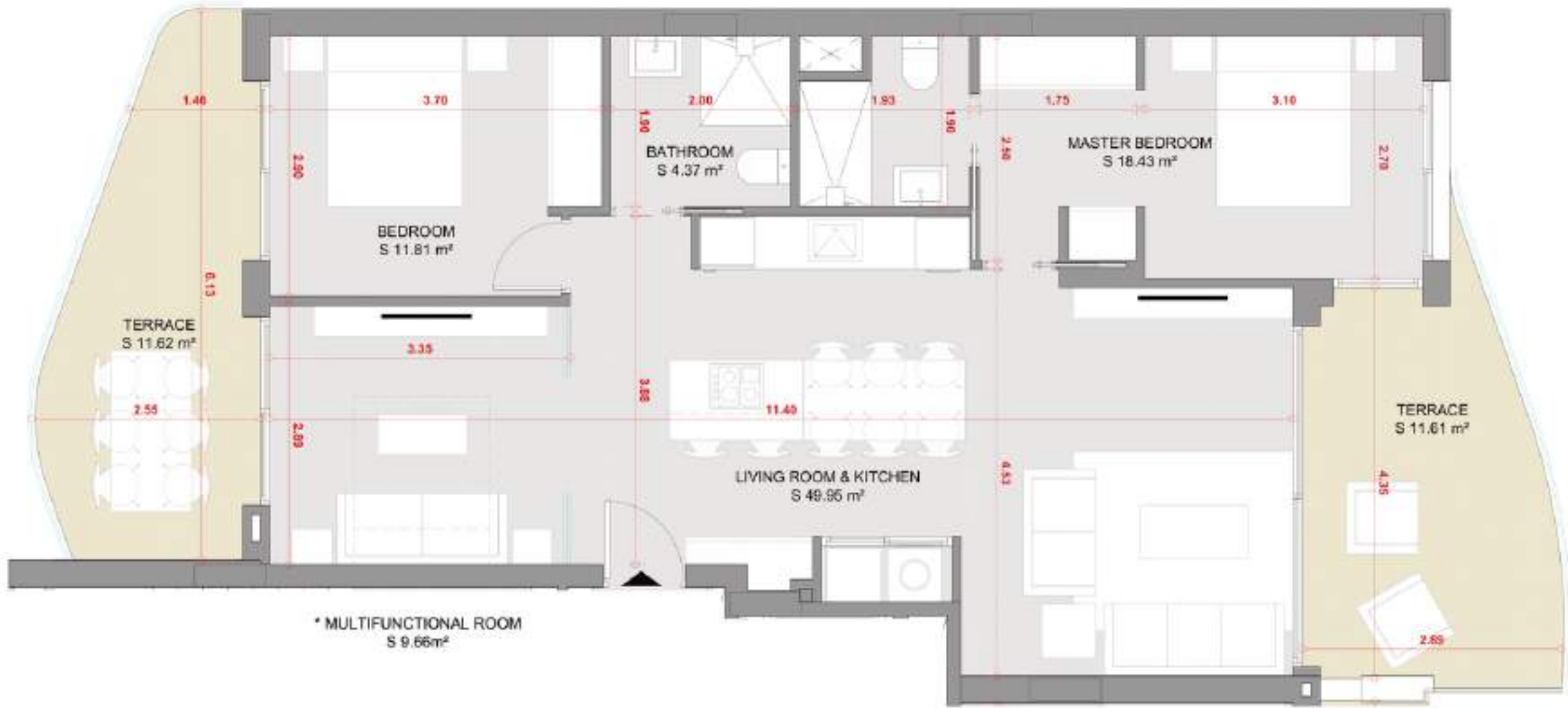
Plan y seite d'ambles modifications par raisons d'exigences de maitre technique o juridique. Les superficies son approximates. Coccina y amueblamiento orientativo, sin valor contractual. / Plans subject to possible modifications for reasons or requirements of a technical or legal nature. Surfaces are approximate. Kitchen and furniture for guidance, without contractual value.

G  
r  
o  
u  
n  
d  
  
F  
l  
o  
o  
r





VIVIENDA/HOUSE **A**



SOUTH WEST  
MINOR SEA

SOUTH EAST  
MEDITERRANEAN SEA



TOTAL

TOTAL BUILT AREA	122.75 m <sup>2</sup>
HOUSE, BUILT AREA	84.56 m <sup>2</sup>
TERRACE	23.23 m <sup>2</sup>
PARKING AREA	10.49 m <sup>2</sup>
STG. ROOM AREA	4.47 m <sup>2</sup>



Plano y foto de posibles modificaciones por razones o exigencias de índole técnico o jurídica. Las superficies son aproximadas. Cocina y amueblamiento orientativo, sin valor contractual. /  
Plan and photo of possible modifications for reasons or requirements of a technical or legal nature. Surfaces are approximate. Kitchen and furniture for guidance, without contractual value.

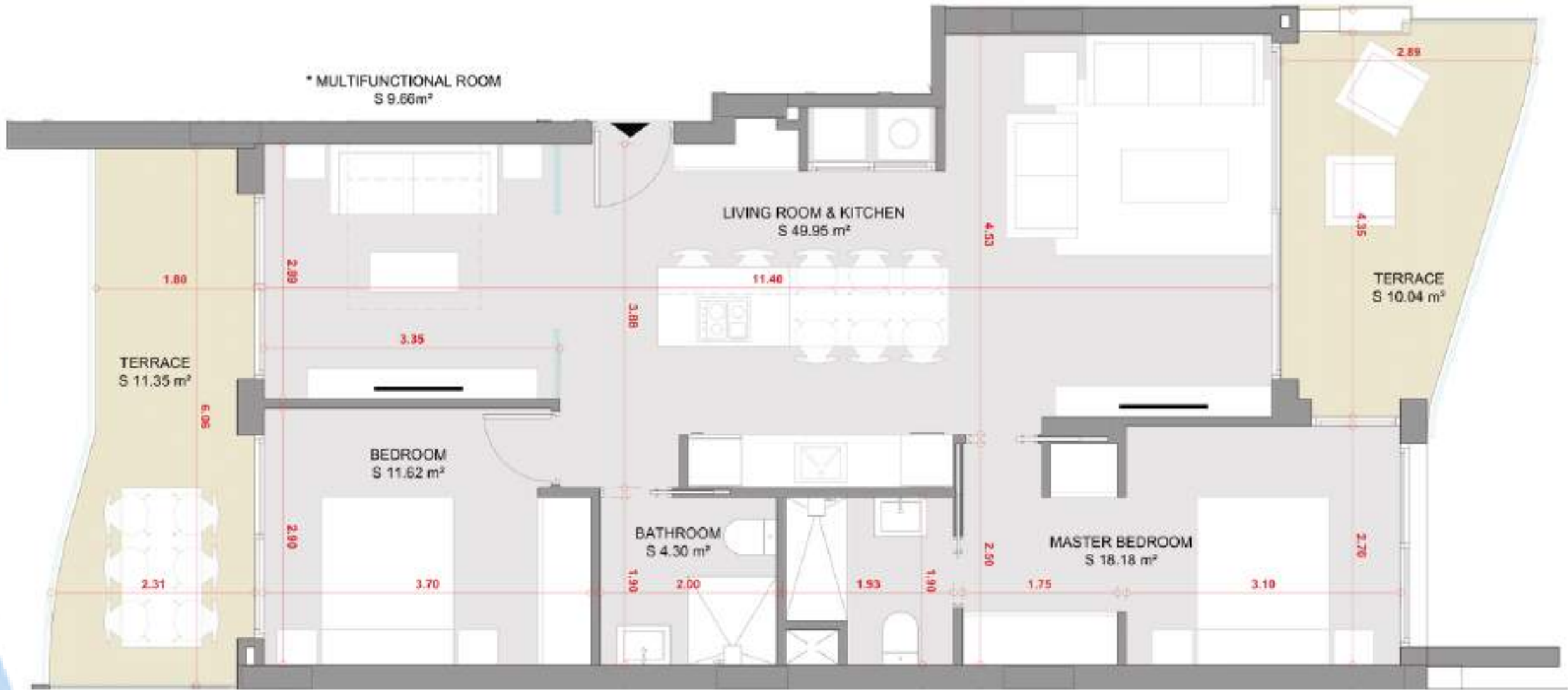
O  
t  
h  
e  
r  
  
F  
l  
o  
o  
r  
s





VIVIENDA/HOUSE **B**

SOUTH WEST  
MINOR SEA



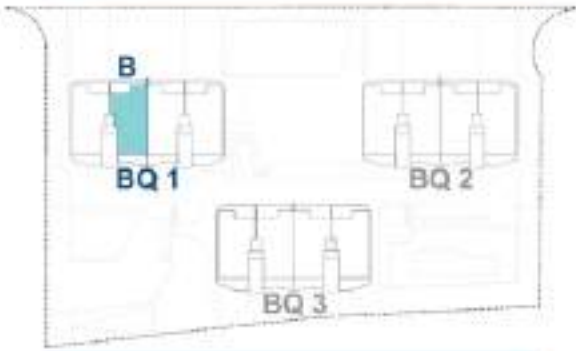
SOUTH EAST  
MEDITERRANEAN SEA



TOTAL

TOTAL BUILT AREA	119.58 m <sup>2</sup>
HOUSE BUILT AREA	83.23 m <sup>2</sup>
TERRACE	21.39 m <sup>2</sup>
PARKING AREA	10.49 m <sup>2</sup>
STG. ROOM AREA	4.47 m <sup>2</sup>

MEDITERRANEAN SEA



MINOR SEA

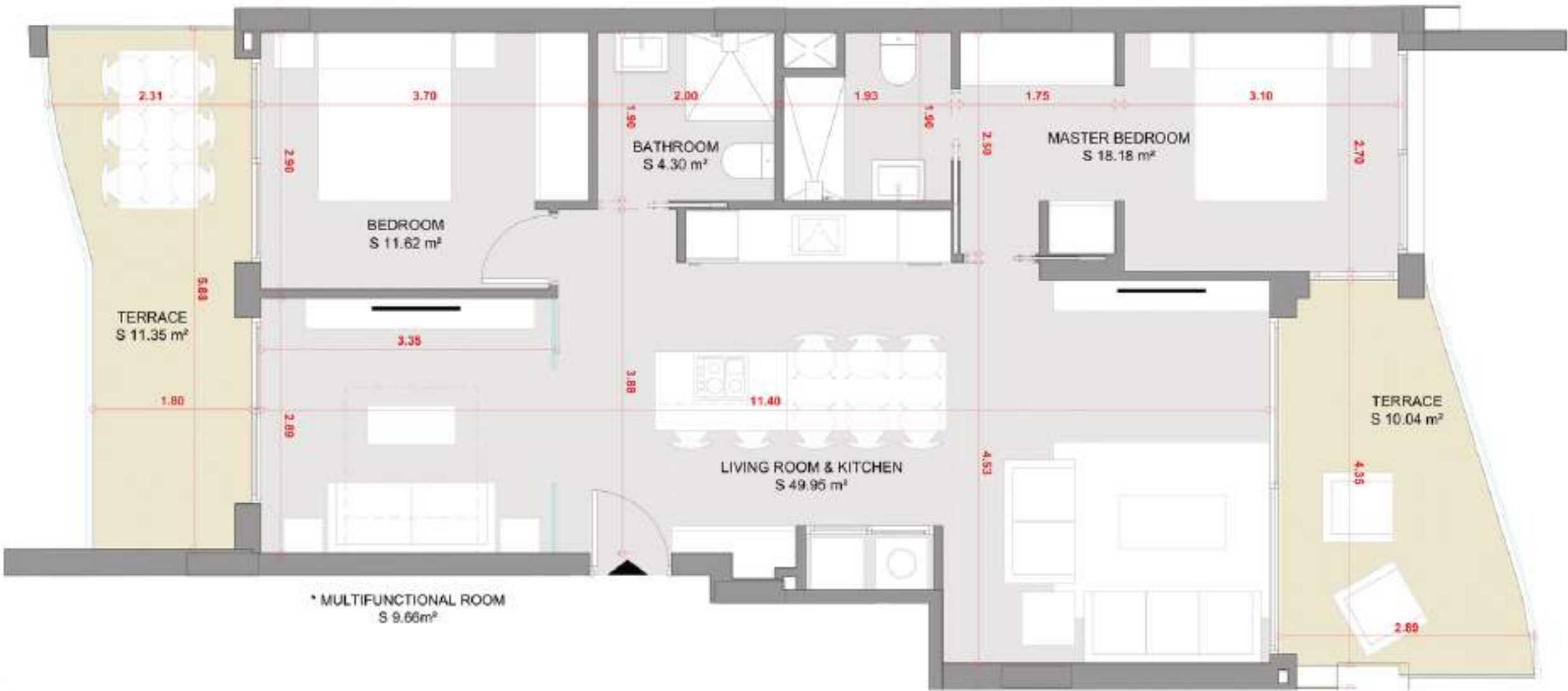
Plano a guisa de posibles modificaciones por razones o exigencias de índole técnico o jurídica. Las superficies son aproximadas. Cocina y amueblamiento orientativo, sin valor contractual. /  
Plan as a guide to possible modifications for reasons or requirements of a technical or legal nature. Surfaces are approximate. Kitchen and furniture for guidance, without contractual value.

Other Floors





VIVIENDA/HOUSE C



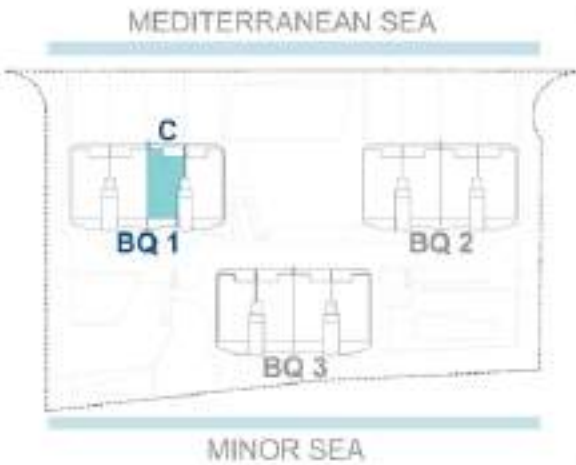
SOUTH WEST  
MINOR SEA

SOUTH EAST  
MEDITERRANEAN SEA



TOTAL

TOTAL BUILT AREA	119.58 m²
HOUSE BUILT AREA	83.23 m²
TERRACE	21.39 m²
PARKING AREA	10.49 m²
STG. ROOM AREA	4.47 m²



Plano a guisa de posibles modificaciones por razones o exigencias de índole técnica o jurídica. Las superficies son aproximadas. Cocina y amueblamiento orientativo, sin valor contractual. /  
Plan as a guide of possible modifications for reasons or requirements of a technical or legal nature. Surfaces are approximate. Kitchen and furniture for guidance, without contractual value.

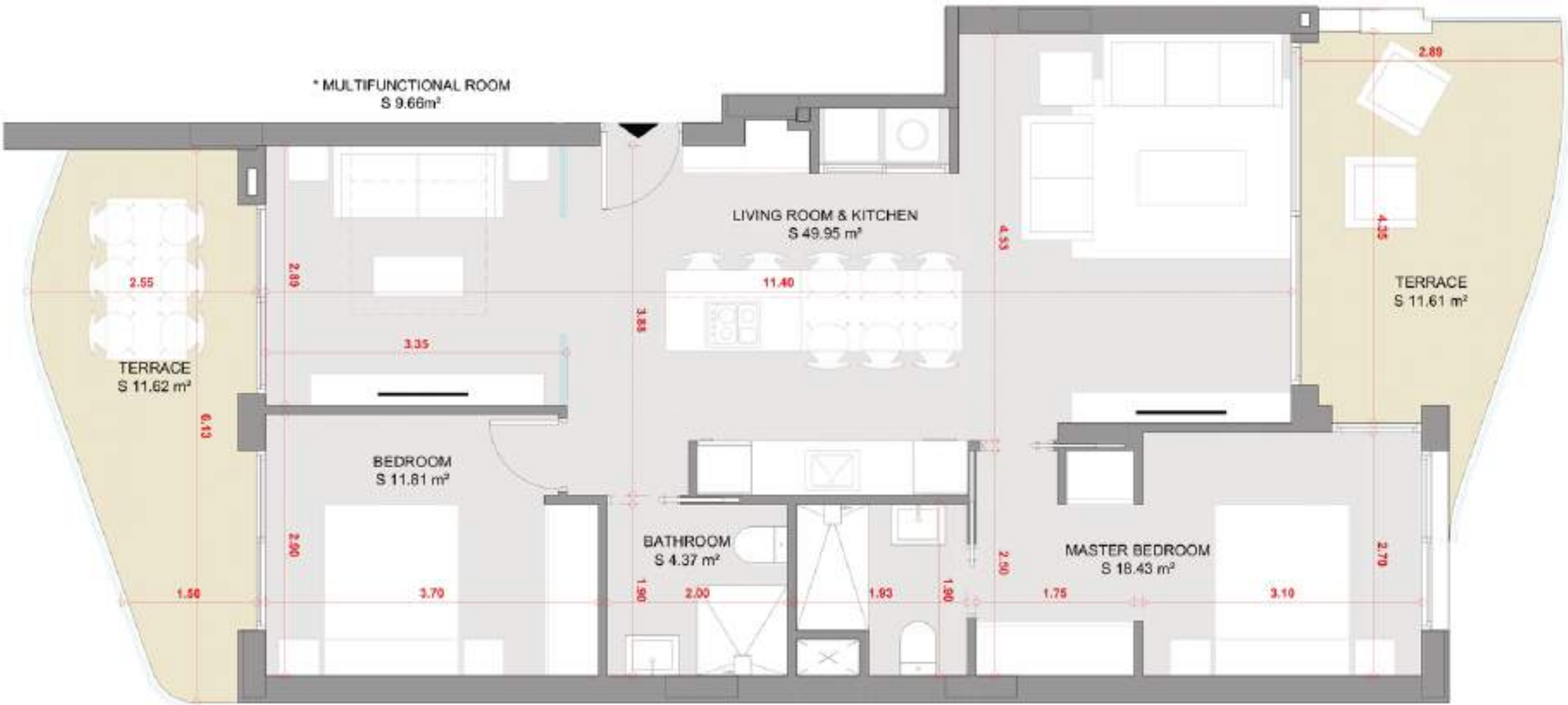
Other Floors





VIVIENDA/HOUSE **D**

SOUTH WEST  
MINOR SEA



SOUTH EAST  
MEDITERRANEAN SEA



TOTAL

TOTAL BUILT AREA	122.75 m <sup>2</sup>
HOUSE, BUILT AREA	84.56 m <sup>2</sup>
TERRACE	23.23 m <sup>2</sup>
PARKING AREA	10.49 m <sup>2</sup>
STG. ROOM AREA	4.47 m <sup>2</sup>



Plano a este o cualquier modificaciónes por razones o exigencias de índole técnico o jurídica. Las superficies son aproximadas. Cocina y amueblamiento orientativo, sin valor contractual. /  
Modificat acest plan sau orice modificare pentru motive de natură tehnică sau juridică. Suprafețele sunt aproximative. Bucătăria și mobilierul sunt orientative, fără valoare contractuală.

Other  
Floors



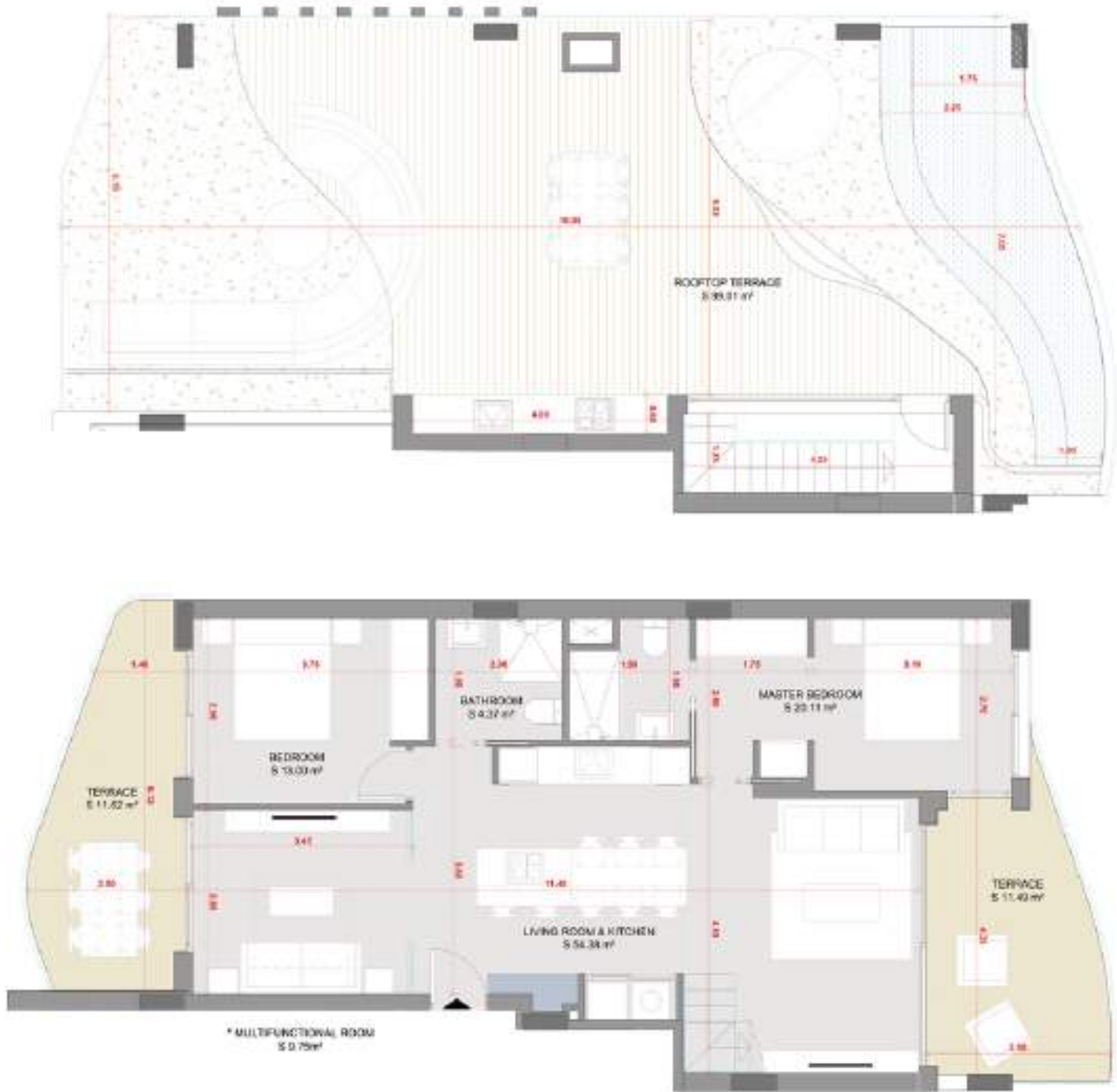


VIVIENDA/HOUSE **A**

Penthouse

SOUTH WEST  
MINOR SEA

SOUTH EAST  
MEDITERRANEAN SEA



TOTAL	
TOTAL BUILT AREA	229.34 m²
HOUSE BUILT AREA	92.26 m²
TERRACE	23.11 m²
SOLARIUM	99.01 m²
PARKING AREA	10.49 m²
STG. ROOM AREA	4.47 m²



Plano y área de posibles modificaciones por razones o exigencias de índole técnico o jurídica. Las superficies son aproximadas. Cocina y amueblamiento orientativo, sin valor contractual. /  
Modifications and possible modifications for reasons or requirements of a technical or legal nature; surfaces are approximate. Kitchen and furniture for guidance, without contractual value.

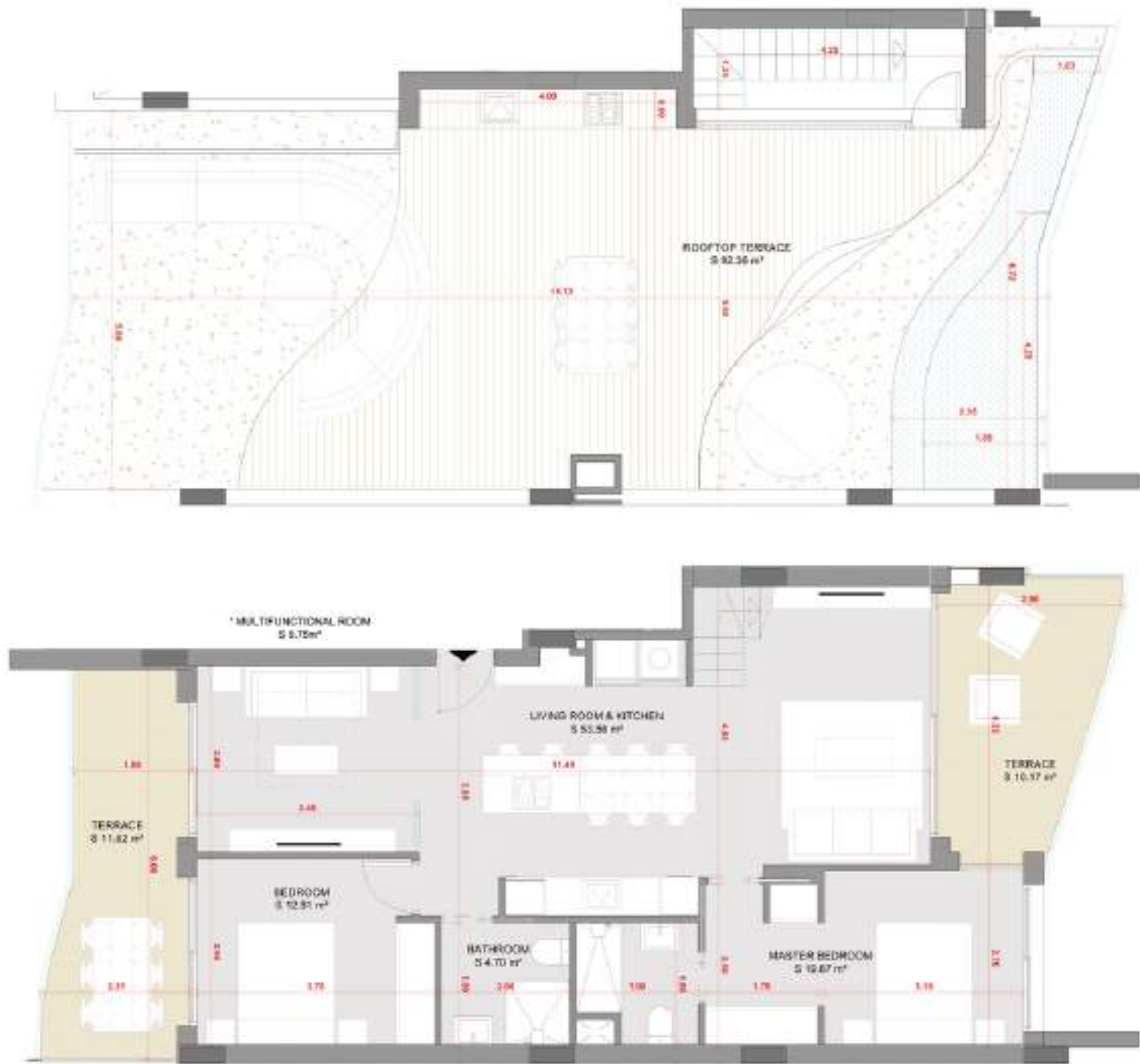




VIVIENDA/HOUSE **B**

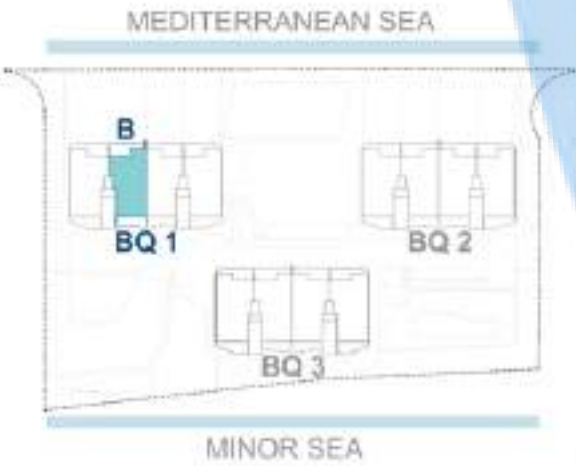
SOUTH WEST  
MINOR SEA

SOUTH EAST  
MEDITERRANEAN SEA



TOTAL

TOTAL BUILT AREA	220.04 m²
HOUSE, BUILT AREA	90.93 m²
TERRACE	21.79 m²
SOLARIUM	92.36 m²
PARKING AREA	10.49 m²
STG. ROOM AREA	4.47 m²



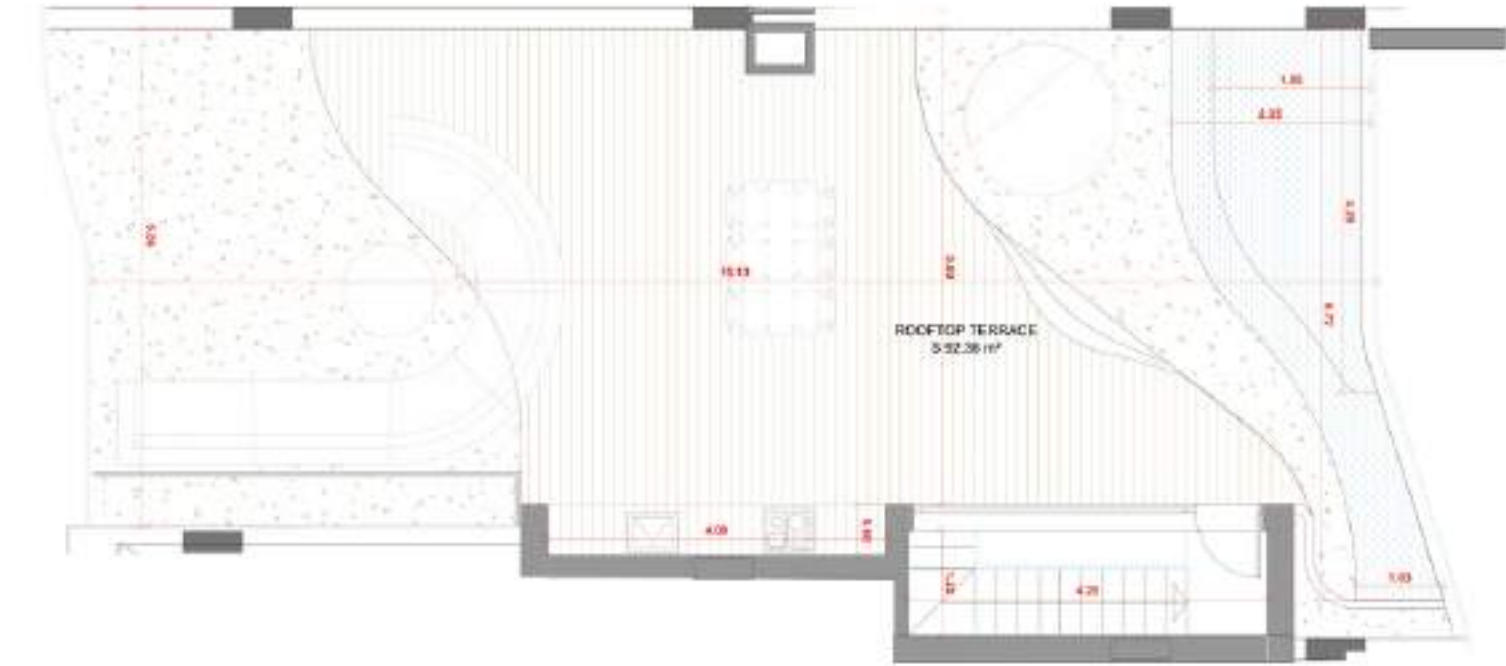
Plano a este o cualquier modificación por razones o exigencias de índole técnica o jurídica. Las superficies son aproximadas. Cocina y amueblamiento orientativo, sin valor contractual. /  
Plan at this and any modification for reasons or requirements of a technical or legal nature. Surfaces are approximate. Kitchen and furniture for guidance, without contractual value.

Penthouse





SOUTH WEST  
MINOR SEA

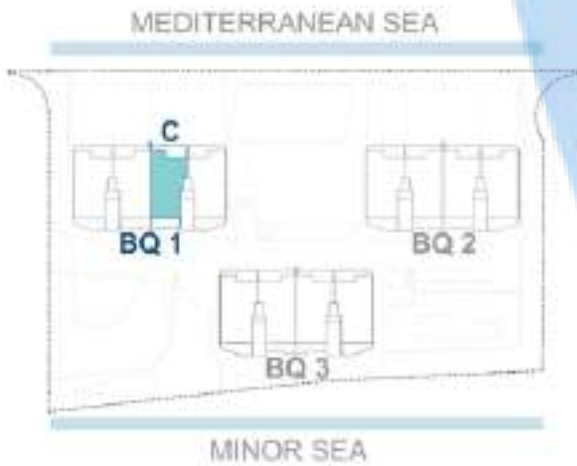


TOTAL

TOTAL BUILT AREA	220.04 m²
HOUSE, BUILT AREA	90.93 m²
TERRACE	21.79 m²
SOLARIUM	92.36 m²
PARKING AREA	10.49 m²
STG. ROOM AREA	4.47 m²

VIVIENDA/HOUSE C

SOUTH EAST  
MEDITERRANEAN SEA

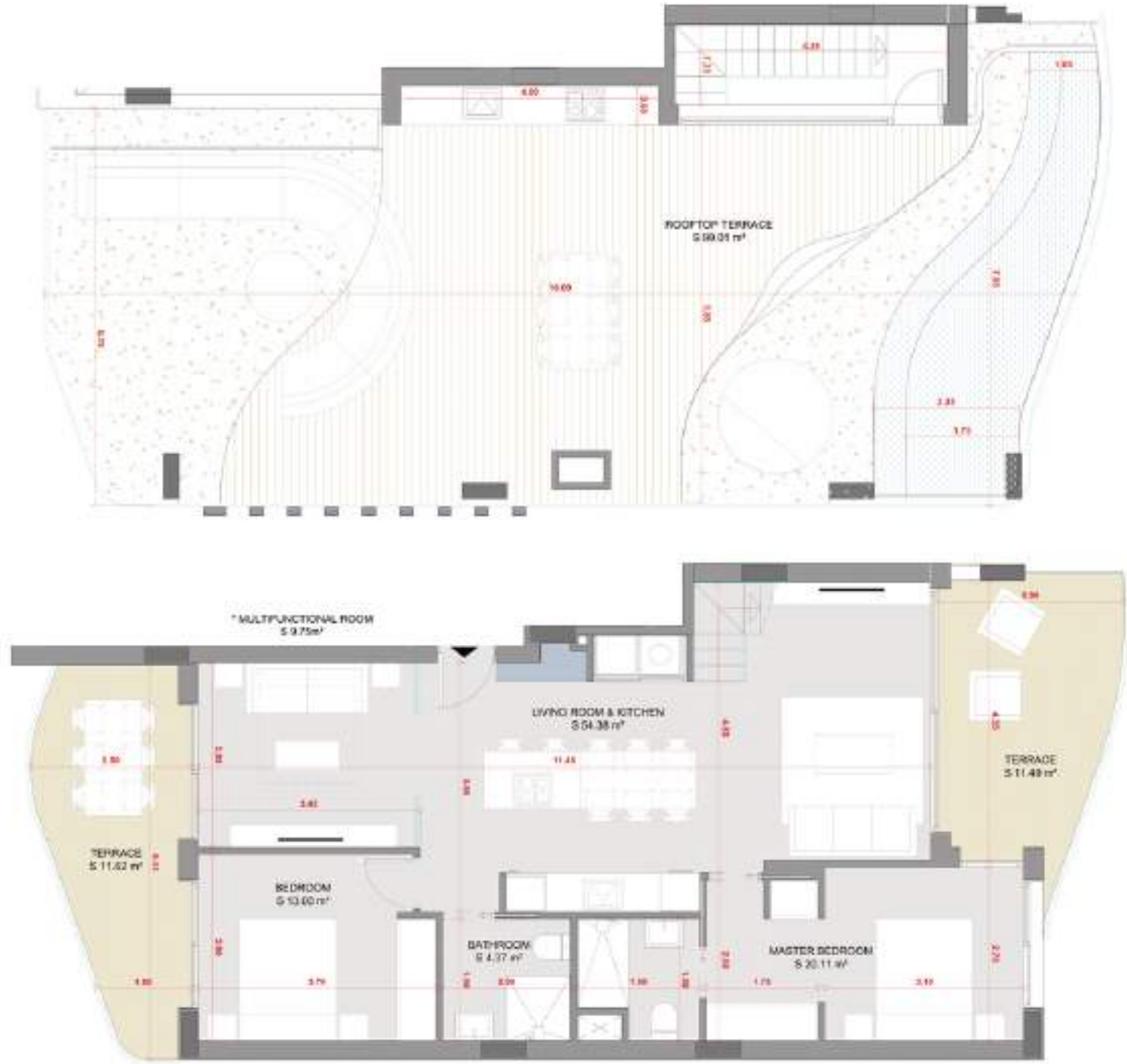


Plano a este o cualquier modificación por razones o exigencias de índole técnico o jurídica. Las superficies son aproximadas. Cocina y amueblamiento orientativo, sin valor contractual. /  
Konsultovat hypotézu, modifikácie z dôvodu alebo požiadaviek technického alebo právneho charakteru. Povrchy sú približné. Kuchyňa a nábytok sú orientačné, bez hodnoty zmluvy.





SOUTH WEST  
MINOR SEA



TOTAL

TOTAL BUILT AREA	229.34 m <sup>2</sup>
HOUSE, BUILT AREA	92.26 m <sup>2</sup>
TERRACE	23.11 m <sup>2</sup>
SOLARIUM	99.01 m <sup>2</sup>
PARKING AREA	10.49 m <sup>2</sup>
STG. ROOM AREA	4.47 m <sup>2</sup>

Plano y planos de posibles modificaciones por razones o exigencias de índole técnico o jurídica. Las superficies son aproximadas. Cocina y amueblamiento orientativo, sin valor contractual. / Plans and plans of possible modifications for reasons or requirements of a technical or legal nature. Surfaces are approximate. Kitchen and furniture for guidance, without contractual value.

VIVIENDA/HOUSE **D**

SOUTH EAST  
MEDITERRANEAN SEA



Penthouse



# The best and healthiest climate in Europe

At La Manga you will experience the best and healthiest climate in Europe. The surrounding area enjoys a Mediterranean subtropical climate with warm pleasant summers 28-32 °C and mild winters. It is for a good reason that this coastline is called the "Costa Calida" warm coast.

The sun shines an average of 320 days a year. The fauna includes pines, fruit and almond trees palms aloe vera and many types of grasses flowers and is perfectly adapted to this ideal climate.





The fertile soil ensures an abundance of flavorful Mediterranean fruits and vegetables. The World Health Organization (WHO) has declared the region the healthiest and best climate in Europe.





# Explore the sand beaches, caves and bays of amazing beauty...

Discover volcanic piece of land called "La Manga" - it is cut off by natural channels that keep the two seas in contact with each other. Enjoy long sandy beaches with amazing Caribbean vibes and extraordinary bays and beaches of an unreal beauty in closeby Cabo de Palos. Another days you can visit true jewel of the region - breathtaking natural park Calblanque.







Kilometers of unspoiled sandy beaches, unprecedentedly beautiful, even for the Spanish Costa's, and many intimate hidden bays to discover with a snorkel, kayak, paddle surf or sailboat are waiting for you.















# Let's dive in the crystal clear waters and explore the wonderful water world...

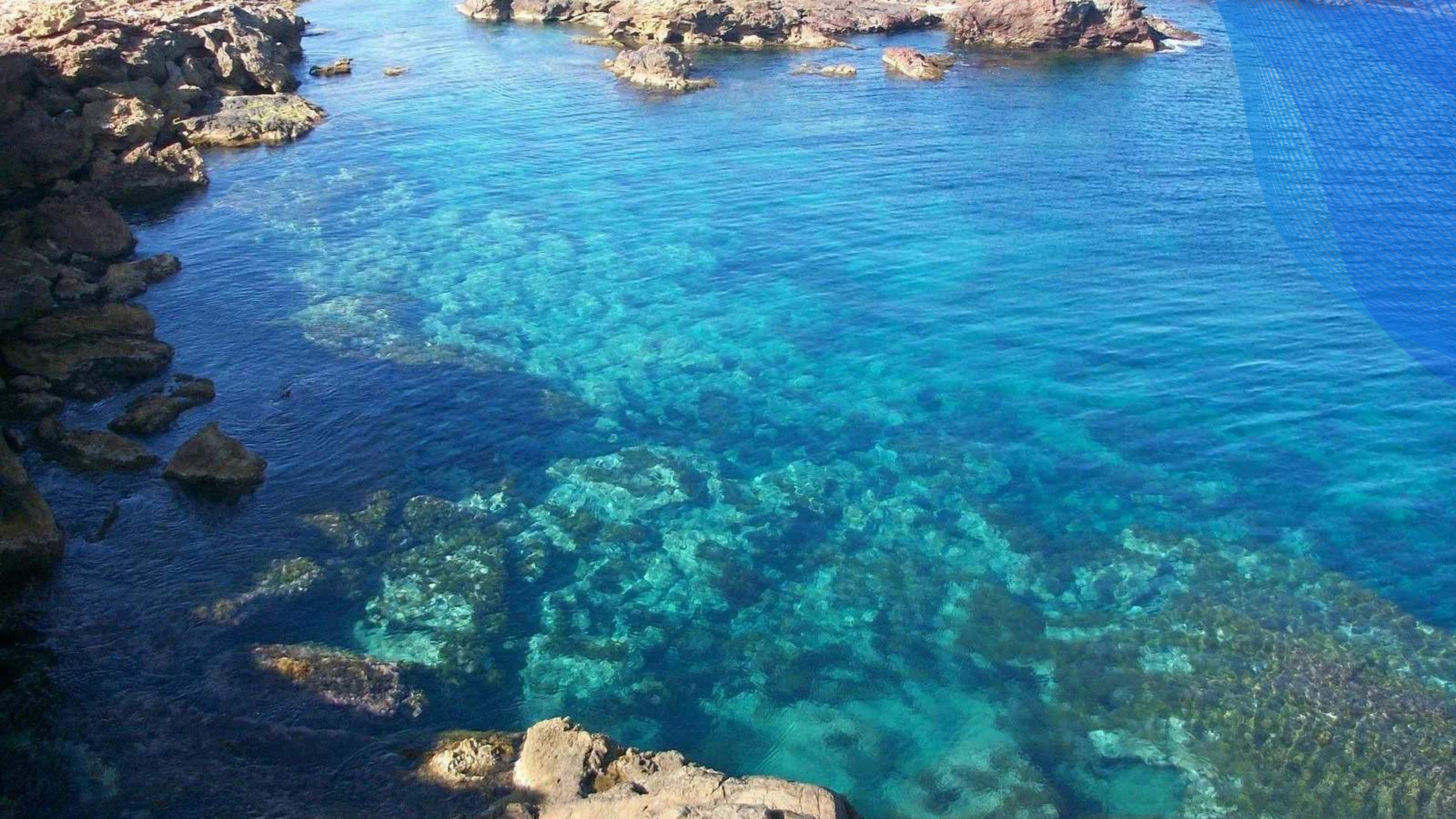
Right 10 minutes away in Cabo de Palos you can snorkel anywhere and scuba diving. If you do not have a PADI yet, then it is now absolute a good time to get a diving license in one of the professional diving schools that are rich in Cabo de Palos.

The impressive underwater reserve Islas Hormigas is known as best snorkel and diving location in Europe. There are every day boat trips to the best dive spots and many wrecks that it reserve is rich. And the water temperature in the summer is an pleasant 26 degrees.









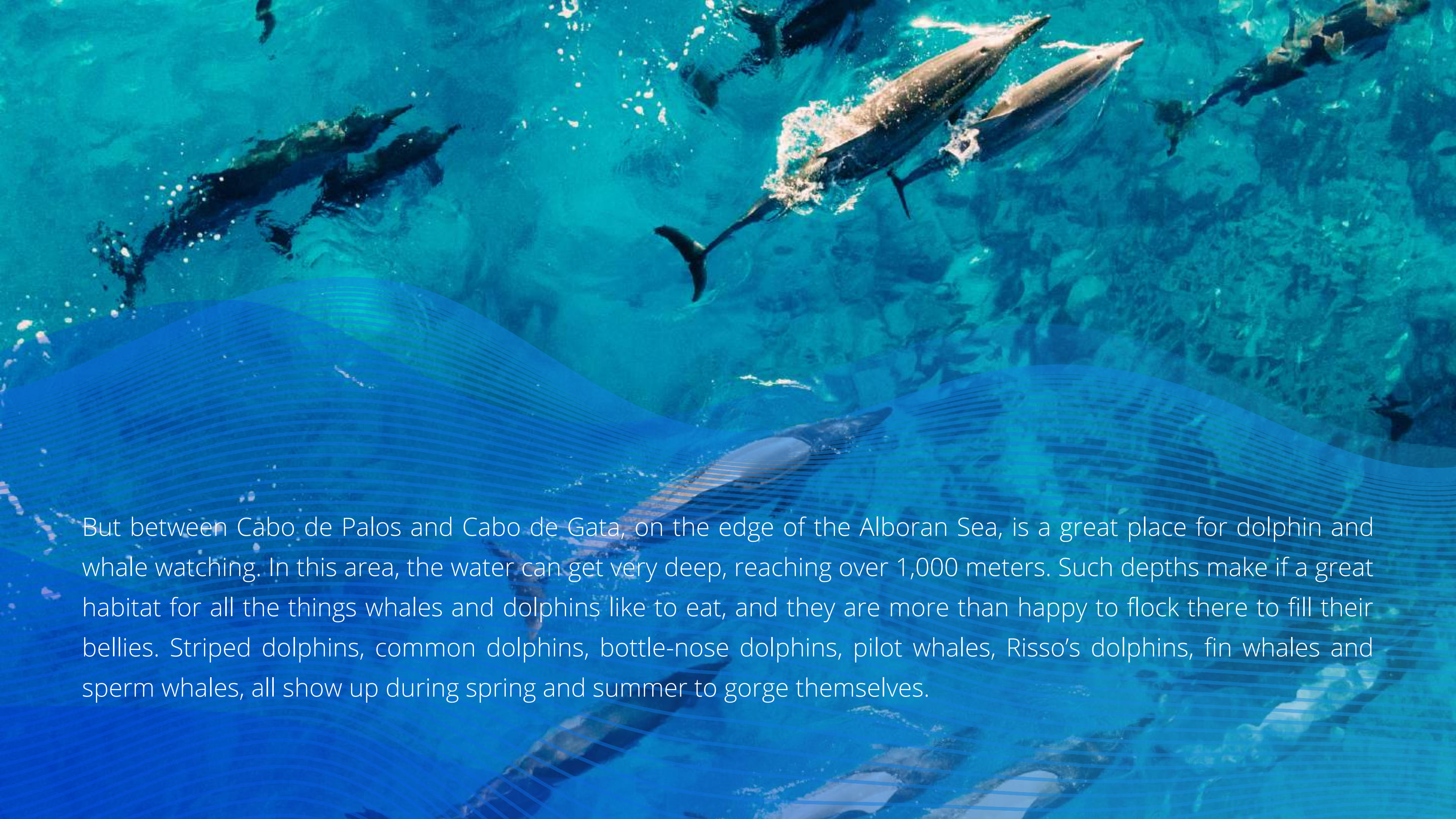


# Dolphins and Whales Watching

Spotting dolphins and whales in the Mediterranean isn't always easy. You really have to be in the right place at the right time! There are a few coastal hotspots that would increase your chances of seeing these gorgeous animals though, so if seeing them is your dream then pick your location carefully – and take your lucky charms!





An underwater photograph showing several dolphins and whales swimming in clear, blue water. The dolphins are sleek and dark, with some showing lighter underbellies. They are moving gracefully through the water, with some creating small splashes. The background is a deep blue, suggesting a deep-sea environment. The overall scene is serene and captures the natural behavior of these marine mammals.

But between Cabo de Palos and Cabo de Gata, on the edge of the Alboran Sea, is a great place for dolphin and whale watching. In this area, the water can get very deep, reaching over 1,000 meters. Such depths make it a great habitat for all the things whales and dolphins like to eat, and they are more than happy to flock there to fill their bellies. Striped dolphins, common dolphins, bottle-nose dolphins, pilot whales, Risso's dolphins, fin whales and sperm whales, all show up during spring and summer to gorge themselves.





## Experience: Sports & Leisure Paradise

For sports enthusiasts the region is a Walhalla with all possible watersports sports.

Overlooking Calblanque lies La Manga Club Golf Resort within a 15-minute drive and rewarded 3x Europe's best golf resort with 22 European specialties restaurants, 28 tennis courts, 5 \* hotel, wellness and spa, fitness center, 3 x 18 holes golf courses and home to many European football clubs and country teams for their training camps.







# Kite or Wind Surfing

Do you like adventures? You can enjoy every day learning a different water sport. Kite surfing and wind surfing is the most favourite ones in this area.

You can find a lot of surfing schools and bars -this location is made for surfing! Because Spain is considered the mecca of windsurfing in Europe, its beaches regularly serve as venues for international competitions, and it is the preferred destination of all the most international windsurfers. In any case, there are many schools all along this coast that can help you to take your first steps in the sport.







# Luxury Restaurants

Spain has a vivid history, with more than a few cultures passing through the country over the years. Because of this, Spanish cuisine is made up of many different cultures in reality, with traditional foods from the Romans, the Carthaginians and the Jews all playing their part in today's take on Spanish cuisine.

In this location you can find all the kind of restaurants and beach bars to your taste. We have many recommendations such as Michelin's restaurants, beach restaurants with wonderful views, sushi or seafood, spanish cuisine or exotic food - all the very popular spots.











# Live a milenary culture, city and traditions...

You combine a ride through nature with a cultural trip. Cartagena is a 3000 year old roman port city with a vibrant center.

Visit the amphitheater, take a boat trip, visit the castles or experience the festivities of the Semana Santa. This authentic city surrounded by mountains and castles you will reach in just 15 minutes. There is a party every month in the city and the tropical carnival parade and the party "Cartagineses" in September are absolute not to be missed events.













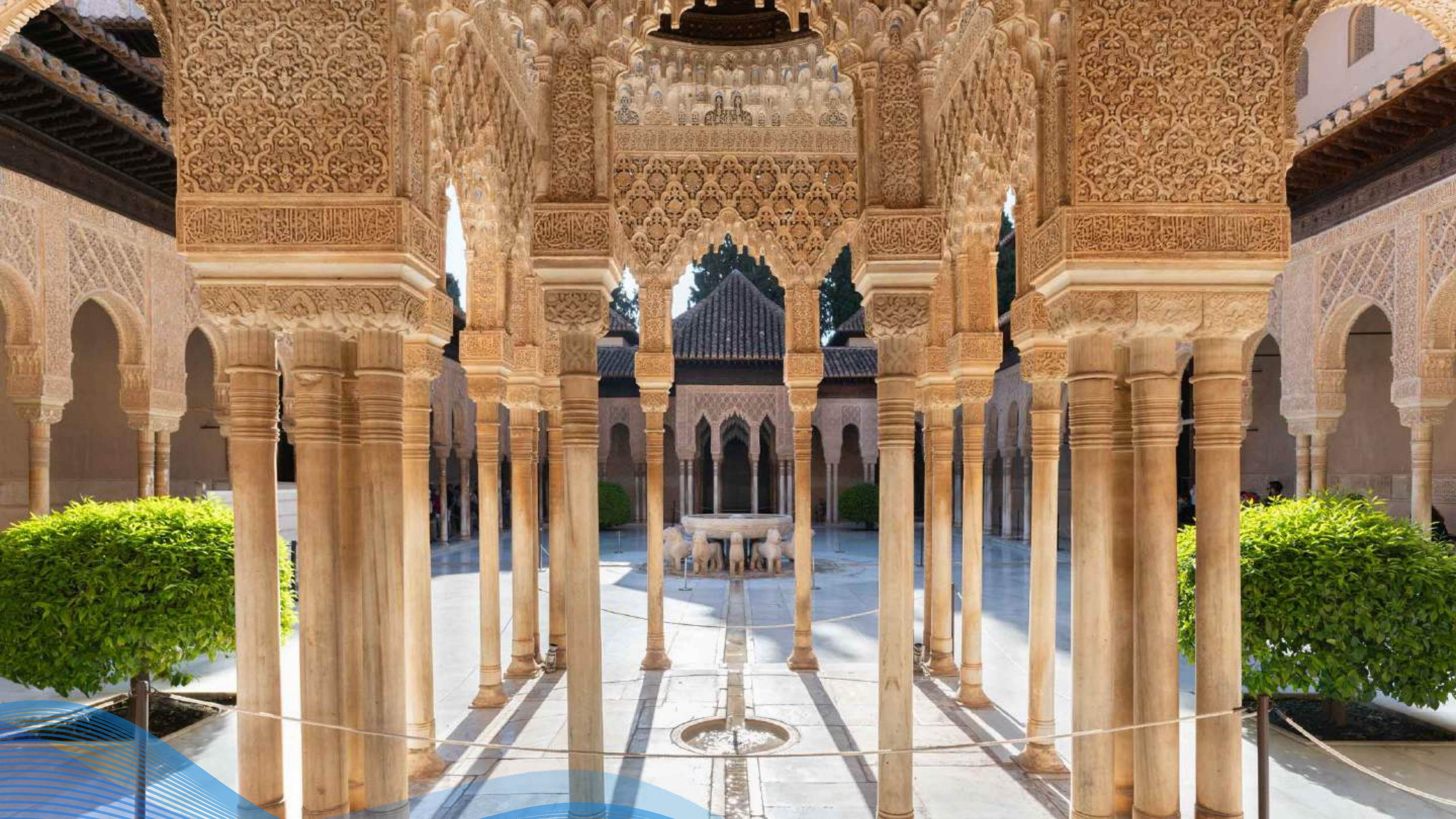


## Enjoy sun, snow and spectacular views!

In the morning in bikini on the beach and in the afternoon on the long slats? It is possible from this location!

Only 3 hours drive from your home is Granada with its world famous 'Alhambra' and the ski area Sierra Nevada, a full-fledged and professional ski resort with 121 kilometers of slopes of all levels, 20 ski lifts, ski schools, snow cannons and many hotels and ski village. The maximum height is 3300 meters with snow from December to April. At the maximum height you can even see Africa.











# Live in a well communicated and modern region

Due to the excellent infrastructure you reach the airports of Murcia and Alicante in respectively 30 and 70 minutes. From Cartagena trains are leaving with connections to Madrid, Barcelona and the rest of Europe.

And of course you will find at your door de most beautiful beaches and hidden caves and bays, surrounded with stunning flora and fauna.

